



# THE LINK CONFERENCE KIT



THE LINK  
*'flourish'*



# ABOUT THE LINK

THE LINK: Your Destination for Vibrant Intergenerational Community Engagement! Nestled within the heart of our community lies a haven of connection, nature, and togetherness – welcome to THE LINK. A place where generations unite, nature thrives, and meaningful interactions unfold, THE LINK is more than just a space; it's a bridge between individuals, families, and the beauty of the world around us.

THE LINK site supports intergenerational and connected community events, activities and spaces in alignment with Sawtell Catholic Care's Mission Vision and Values.

The site comprises wheelchair accessible facilities with extended covered outdoor spaces accommodating a wide range of activities, 3 function venues with access to gardens, accessible and dementia friendly landscaped way finding areas and spaces including tranquil refectory and sensory gardens with intergenerational play and exercise elements, a cafe and an environmentally friendly community garden.

The Link Cafe by Nyanggan Gapi is nestled in The Link grounds, Toormina. The cafe is surrounded by award winning gardens, a playground, outdoor seating, community gardens and wheelchair accessibility paths.

100% of their profits go to support local Aboriginal community through employment, community programs and the Gumbaynggirr Giingana Freedom School. The cafe is open Monday to Saturday 8:30am to 2:30pm.



**P:** (02) 6638 9911 **E:** [link@scca.net.au](mailto:link@scca.net.au) **A:** 631 Hogbin Drive, Toormina NSW 2452  
**W:** [thelinkevents.com.au](http://thelinkevents.com.au)

THE LINK  
*'flourish'*



# THE LINK VENUES

## REFLECTIONS

The Reflections has tranquil garden and pond views and is ideal for smaller executive style corporate meetings. The venue has ample natural light, high raked ceilings and is equipped with a smart TV ,WIFI and tea & coffee.



## LAKESIDE

The Lakeside is nestled into landscaped gardens situated overlooking the picturesque pond and fountain. The venue has ample natural light a large kitchen and an undercover deck space ideal for breakout sessions. The venue includes tea & coffee, smart TV and WIFI



## THE PAVILION

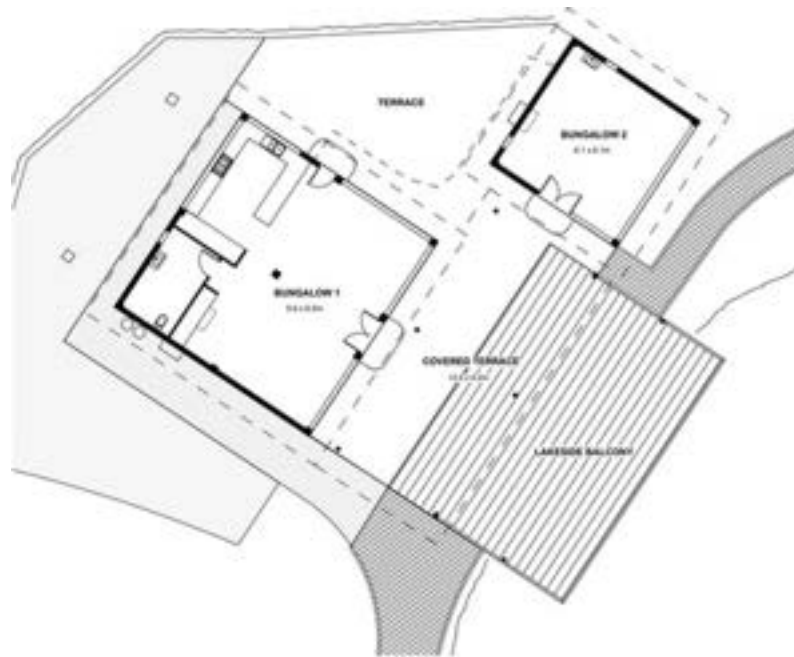
The Pavilion is the largest venue set amongst established gardens and has high ceilings, natural light and is a pillarless venue. The venue has glass bi fold doors that open onto a paved undercover patio and grassed amphitheatre ideal for breakout sessions. The venue includes tea & coffee, smart TV and WIFI.



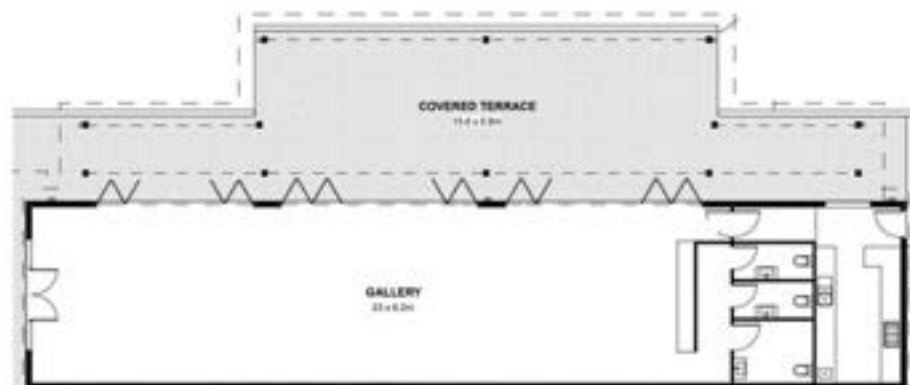
**P:** (02) 6638 9911 **E:** [link@scca.net.au](mailto:link@scca.net.au) **A:** 631 Hogbin Drive, Toormina NSW 2452  
**W:** [thelinkevents.com.au](http://thelinkevents.com.au)



# FLOOR PLANS REFLECTIONS & LAKESIDE









## THE PAVILION



P: (02) 6638 9911 E: [link@scca.net.au](mailto:link@scca.net.au) A: 631 Hogbin Drive, Toormina NSW 2452  
W: [thelinkevents.com.au](http://thelinkevents.com.au)

# VENUE CAPACITIES



Setup style	Reflections	Lakeside	Pavilion
<b>Boardroom</b> 	12	20	40
<b>Theatre</b> 	15	30	80
<b>Cabaret</b> 	N/A	24	60
<b>U Shape</b> 	N/A	16	30
<b>Banquet</b> 	12	40	80
<b>Cocktail</b> 	N/A	50	100

P: (02) 6638 9911 E: [link@scca.net.au](mailto:link@scca.net.au) A: 631 Hogbin Drive, Toormina NSW 2452  
W: [thelinkevents.com.au](http://thelinkevents.com.au)

# AUDIO VISUAL

The three venues at The Link are all equipped with TV's and WIFI access for your convenience.

Additional Audio-Visual equipment is available for hire and includes:

Whiteboards @ \$25 each

Flip Charts @ \$25 each

PA System and Roving Microphone @ \$100

Lapel Mics @ \$50 each

Please advise your coordinator of your audio-visual requirements.

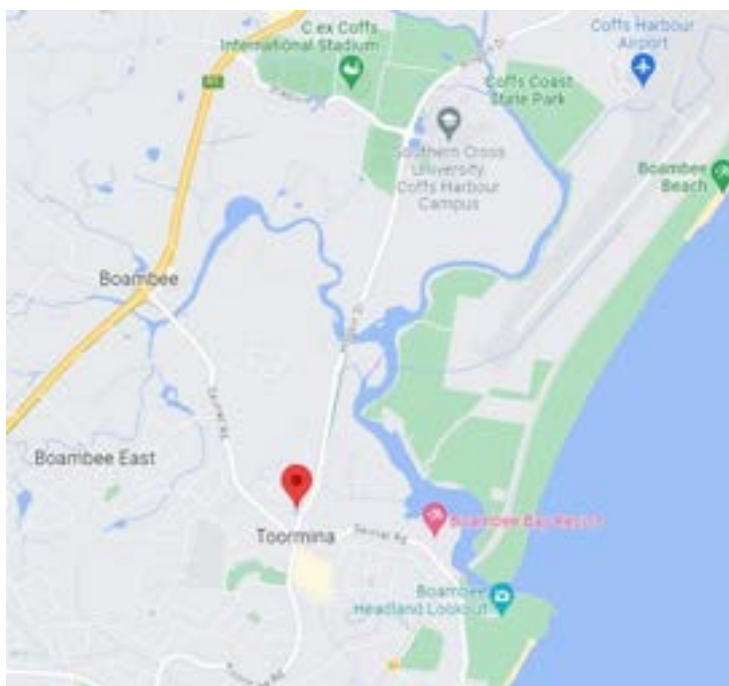
The team at The Link are also available for the printing of conference documents.



**P:** (02) 6638 9911 **E:** [link@scca.net.au](mailto:link@scca.net.au) **A:** 631 Hogbin Drive, Toormina NSW 2452  
**W:** [thelinkevents.com.au](http://thelinkevents.com.au)

# LOCATION

Coffs Harbour is ideally situated approximately half way between Sydney and Brisbane providing an ideal meeting location for corporate delegates. The Link is conveniently situated on Hogbin Drive Toormina an easy accessible location just 2 minutes from the Coffs Harbour Regional Airport and 10 minutes drive to the Coffs CBD. With Sawtell Beach just minutes away and nearby World Heritage listed rainforests the Coffs Coast is your ideal conference destination.



**P:** (02) 6638 9911 **E:** [link@scca.net.au](mailto:link@scca.net.au) **A:** 631 Hogbin Drive, Toormina NSW 2452  
**W:** [thelinkevents.com.au](http://thelinkevents.com.au)





**P:** (02) 6638 9911 **E:** [link@scca.net.au](mailto:link@scca.net.au) **A:** 631 Hogbin Drive, Toormina NSW 2452  
**W:** [thelinkevents.com.au](http://thelinkevents.com.au)

**THE LINK**  
*flourish*